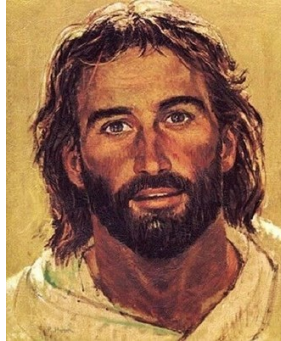


To reach Pastor Mike Knudson

Cell: 402-620-8287

e-mail: 2knuds@comcast.net

B - E Friends



"If our hope in Christ is good only for this life, we are worse off than anybody else.

BUT CHRIST HAS BEEN RAISED TO LIFE! 1 Corinthians 15:19-20

In another place Paul says, "**I know because I saw him myself!**". There we have it, direct testimony. Not dead! Alive! With us! In this faith we live and move through all the tumbles and joys of this life. This is why we Celebrate. This frees us to Serve.

Back in the fall I attended my 50th high school reunion. It was great. I saw people I hadn't seen for so long. I sat at a table for a couple hours with three others. One of them was Gail. We did a lot of laughing together that night. Today I received news from one of the others at the table that Gail died yesterday; she had got her Granddaughter out the door for school at 7:30am and at 7:45 she didn't answer the phone. She was already gone. The person who notified me wanted to know a verse from the Bible they could hold onto. We talked about the verse above, and some others. Gail is in good hands. So are we.

Right before I left home, my Aunt Barbara gave me a nice large reproduction of this portrait of Jesus by the painter named Hook. It isn't a photograph, it's how Hook saw Jesus. The warmth, the personal attention, and the welcome all ring true to me. It is the face of God in the Man Jesus. Although somewhere along the line I lost the cardboard version, this face of Jesus remains with me to this day. **Alive!~Welcoming!**

In the Peace of the risen Christ,

Pastor Mike

>>>> 4TH year Confirmation is headed down the home stretch! We meet Wed April 5 at 5:30 for a meal, discussion, and making plans for May 14, Confirmation Sunday!



BIRTHDAYS

May you have a special day

2 – Oakley Yarwood	11 - Kathy Hanson
3 – Haley Donley	19 – James Willenbring
3 - Sally Larson	20 – Calvin Langer
6 – Jenny Scharpen	20 – Dale Sears
6 – Anne Girdeen	24 – Angela Peterson
7 – Jim Nelson	29 – Donna Barr
10 - Pastor Mike Knudson	29 - Max Mandelkow 30 – Presley Salava

If your birthday doesn't appear on our monthly birthday calendars, please let Tracie know so it can be added.

LOOKING AHEAD

Apr worship schedule

9 a.m. at Eidsvold 10:30 a.m. at Bethlehem

April 2 - Palm Sunday-First Communion at Eidsvold

April 5 - 9th grade confirmation class starts for 5 weeks

April 6 - Maundy Thursday at Eidsvold

April 7 - Good Friday 7:00 p.m. community Good Friday service at English Lutheran, Ellsworth

April 9 - Festival of Easter

April 12—Joint Bethlehem and Eidsvold councils meet at Eidsvold at 5:30

April 29 - Synod Assembly at Rice Lake

May 7 - Last Sunday of SS

May 14 - Confirmation at Eidsvold

May 21 - Joint Parish Worship at Svea with Bishop Laurie Skow-Anderson preaching

June 6 Vacation Bible School at Luther Point Bible Camp in Grantsburg

CARING FOR OUR FAITH COMMUNITY

Giving of our time and talents is one way of serving our faith community. Thank you to the following individuals who will serve this faith community during APRIL

Eidsvold

Church Cleaning: Clean for date by your name

April 2 - DeLoris Bloomstrand

April 9 - Anne Girdeen

April 16 - Jenny Scharpen

April 23 – Megan & Lee Franklin

April 30 - Austin & Molly Langer

Ushers 2 each week

distribute bulletins, count & write attendance on calendar, receive offering

April 2 - DeLoris B & Kathy Sears

April 9 - Available for you

April 16 - Tim and Brenda Singer

April 23 - Dennis Potts & Tricia Lofgren

April 30 - Karen Brostrom & ?

If you would like FM transmission to your car, please notify Alvin or an usher. Directions for setting up FM transmission are with the transmitter.

Altar Committee— Joey Peterson & family

Set up communion for altar distribution as well as prepared chalices on platter, and wash cups.

Altar Colors this month:

Purple for Palm Sunday & Maundy Thursday

White for Easter April 9 and rest of month

April communion bread maker: Tricia Lofgren & Kendra Hanson

READERS:

April 2- Dodee Bloomstrand

April 9 - Fay Albarado

April 16 - Brenda Singer

April 23—Rita Anderson

April 30 - available for you

Bethlehem for April

Altar Committee— Ann Whipple

Readers: April 2 - Pam Johnson

April 16 - Ann Whipple

April 30 - Phyllis Beastrom

Cleaning—Linnea and Bob Soden

April 9- John Beastrom

April 23- Leah Johnson

Thank you for supporting ELCA World Hunger and the ELCA Disaster Relief during Lent.

Each week we've heard how ELCA World Hunger is working in the United States as globally to break the cycle of hunger and poverty. Lenten Suppers were also designated for World Hunger. ELCA World Hunger works in over 60 countries in the world and in 41 states of the United States.



All the Wednesday evening Lenten Worship offerings are designated for ELCA Disaster Relief to help where it is needed, whether it be tornado or flooded areas in the United States, relief from the earthquakes in Turkey or general relief for areas such as Ukraine. There are so many throughout the world that need assistance. Thank you for caring and sharing.

Worship Schedule for April

Sunday Morning Worship:

9:00 a.m. Eidsvold Worship and Sunday

10:30 a.m. Bethlehem Worship

- April 2 - Palm Sunday with Fifth grade First Communion
- April 5 - 9th grade confirmation class
- April 6 - 7:00 Maundy Thursday Worship Eidsvold
- April 7 - Community Good Friday service at English Lutheran Church, Ellsworth
- April 9 - Festival of Easter 9:00 a.m. Eidsvold
10:30 a.m. Bethlehem
- April 16, 23, and 30 9:00 a.m. Worship and SS at Eidsvold
10:30 a.m. Worship at Bethlehem

Synod Assembly—Saturday, April 29 8:30 a.m.-4:00 p.m. At Bethany Lutheran Church, Rice Lake

Agenda includes Worship at 9 a.m., business session to amend the constitution for the election of the bishop, budget, resolutions including the 2024 salary standards, compensation guidelines.

Worship sessions include:

- 1—The Holy Fork in the Road—I'm worried that our church might close. What is God's future for our church?
- 2— Giving Generously, a Spiritual Practice—I'm worried we will run out of money. What is God calling us to do with the abundant resources we have.
3. Who is my neighbor? I'm worried about our planet. Are there small faithful steps we can take to move toward right relationships.
4. Young adults, youth and family—I'm worried the young families won't ever come back to church. How can we pray for and support young adults and families?

Luther Point Bible Camp:

It's time to get excited for Summer 2023! Luther Point Bible Camp's theme this year is Walking with Jesus, one of the amazing things about Jesus is that he once walked among us on earth. When we read stories about Jesus from the bible there is often a place named: Galilee, Jerusalem, and Nazareth to name a few. These are places Jesus was during his time on earth and they are places that still exist today. Join Luther Point as they Walk with Jesus to the places of his life through Bible study, crafts, games and summer fun!—Sam Campeau—Executive Director at Luther Point in Grantsburg, Wisconsin.

Summer Camp Information:

If they will be going into first grade this upcoming school year they are able to go to camp.

1st and 2nd grade: can be a day camp or an overnight

3rd-4th Grade: Half week

4th-6th grade: Full week

7th-9th: Full week

Grandparent/child: half week

Night Life Camp: 7th-12th grade half week

Horse Camp: 5th grade and up

Fish Camp: 4th-6th grade or 7th-12th grade

Family Camp: Arts Camp or half week

B.U.D.D.I.E.S: High School /counselor in training

EARLY BIRD REGISTER BY APRIL 1ST

Vacation Bible School

Mark your calendars!

Tuesday, June 6th, 2023

We will head up to Luther Point Bible Camp for the day!

Our plan is to leave early in the morning—breakfast on the go. We will do music, art/crafts, bible study, games, swimming, lunch, supper, and so much more. We will head home after supper/campfire song.

More information will be coming out soon.

If you are interested in having your child attend please reach out to Tracie to get on the list. If we get

enough children to go we will work on getting a bus to take us there!



Thank you all for donating the Easter Baskets for the Food Shelf! We filled 30 baskets to bring Easter joy to the children.





The location for

Ruby's Pantry has changed for the winter months to Pierce Pepin Cooperative Services at junction of Highway 10 & 63 west of Ellsworth. It will be inside and you drive through to get your foods and items. Ruby's Pantry helps extend your monthly grocery budget and is open to **ANYONE.** **COST \$25 per share** and you will receive an abundance of food. If possible, bring your laundry basket to be loaded with items.

Next distribution is Saturday April 1 from 10:00—11:30.



Last Day of Sunday School Will be May 7th

Cookout/ kickball afterwards if Weather permits!

EUCHRE

Friday, April 14th
7:00 p.m.



Eidsvold church basement

You are invited to come for fun and fellowship - to play euchre (no experience required) or just visit. Bring a snack to share and if you'd like, your own beverage. Coffee will be provided.

IN OUR PRAYERS



RoseAnn Powers, Lynda

Rieck, Sharon Becker,

Pastor Mike, Glenn

Stumpf, Chris Larson

Jim Larson, care

giver Sally Larson, Gerry

Hoffman, Jack Hartman, Doris Halverson

Eidsvold/Svea Conversations:

We met and discussed joint ministries at Bethlehem. We worked on a mission statement and we will **NOT** be changing our names.

A week ago, the joint finance committee composed of members from Eidsvold and Svea met at Eidsvold. Members of that committee met and talked about finances, salaries, and joint budget.

Now both churches are going back to their councils members to discuss potential finances and if this relationship will become a reality.

CONTACT INFORMATION

Pastor Mike Knudson cell 402-620-8287

E-mail 2knuds@comcast.net

Church e-mail: beluther@bevcomm.net

Office: 715-594-3182 leave a message

Newsletter & bulletin items by Tuesday to

Tracie.esterby@gmail.com or text 651-380-2212

OFFERINGS MAY BE MAILED TO:

Eidsvold:	Bethlehem
Eidsvold Lutheran Church	Janice Kearns
W6111 County Rd EE	PO Box 724
Bay City WI 54723	Ellsworth WI 54011

Ellsworth Senior Center

Postponed powerpoint presentation on History of Esdaile and Eidsvold Lutheran Church, presented by Phyllis Beastrom

May 31st 1:30 p.m.

Check out our parish website & Facebook

Worship times will also be posted on these.

<https://www.bethlehemeidsvoldchurches.com/>

<https://www.facebook.com/Bethlehem.Eidsvold>